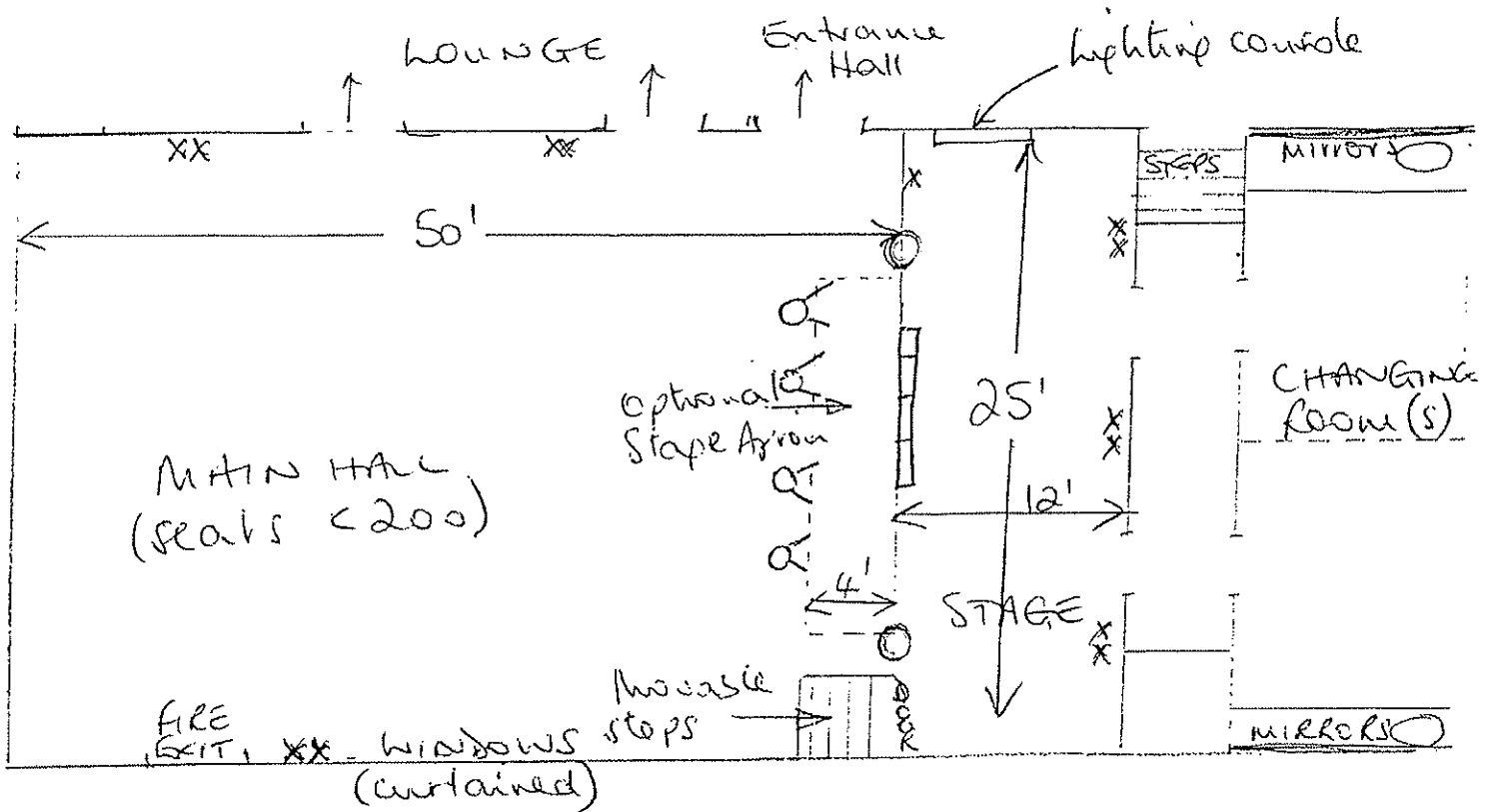


# GOOSTREY VILLAGE HALL

## PLAN OF MAIN HALL, STAGE - BACK STAGE



x 13 amp. power points

○ Curtains

◁ Spotlights suspended from ceiling bar } controls with console

▮ Stage lights (overhead)

- Height of stage Area is about 12'

- The steps to the front of the stage can be positioned at the centre, or up to the Apron.

- Access to the back of the stage is by 2 sliding doors.